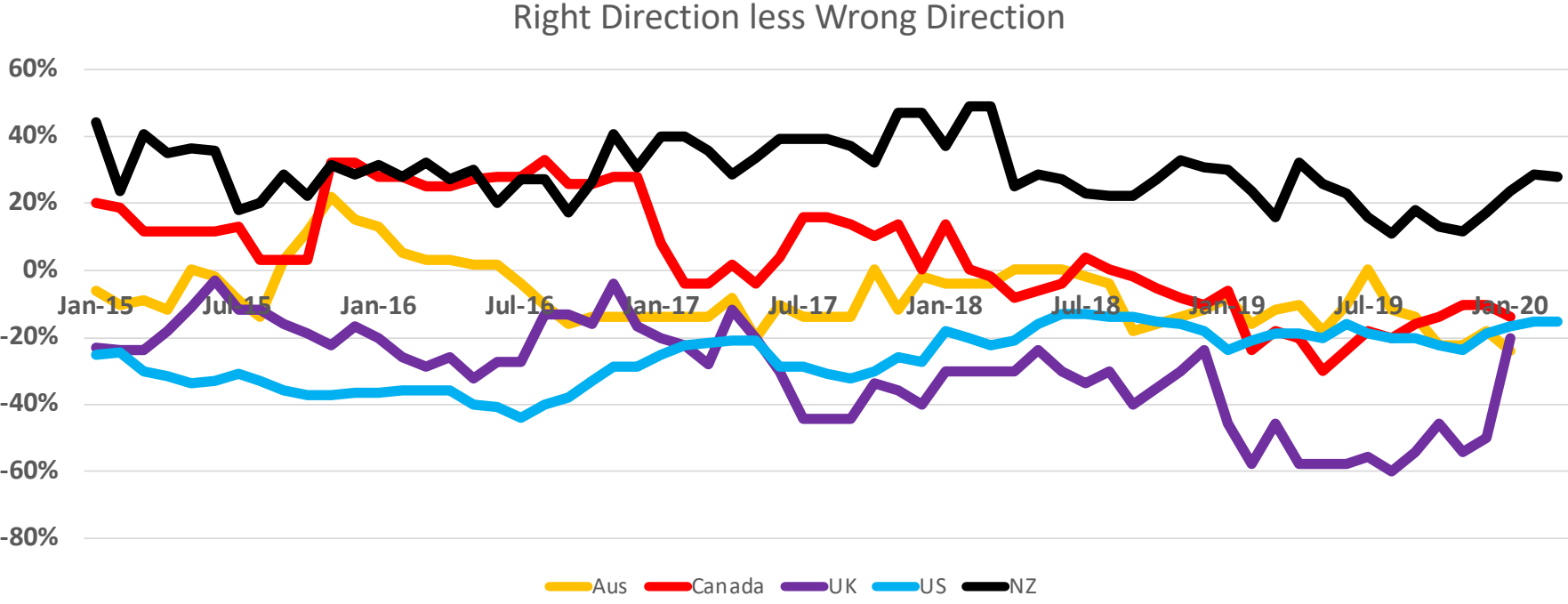


186 days until the election – probably!

DAVID FARRAR, CURIA MARKET RESEARCH LTD

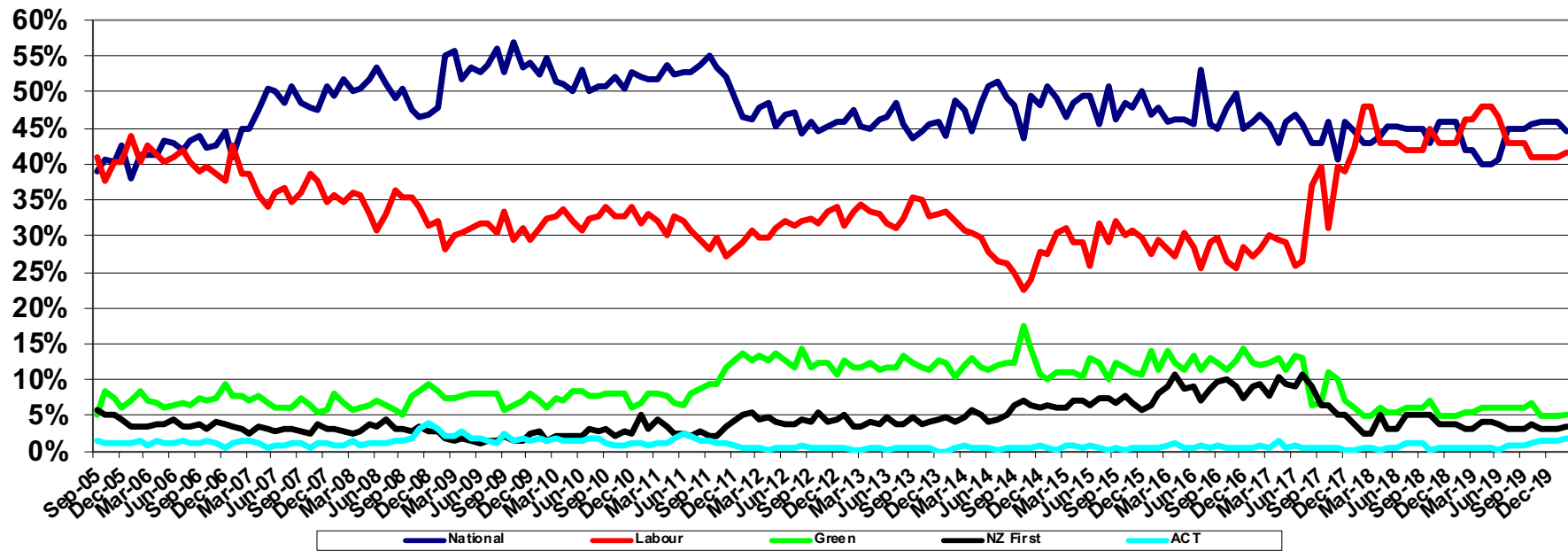


Net Country Direction since 2015



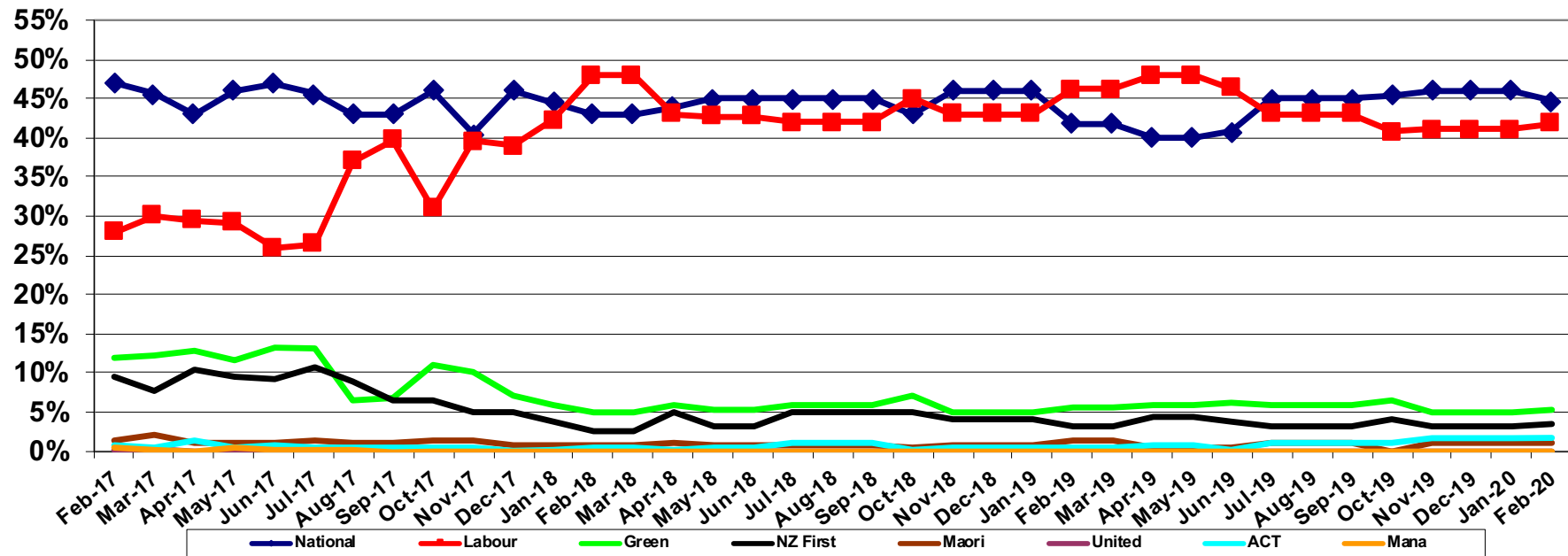
The polls since 2005

All Public Polls

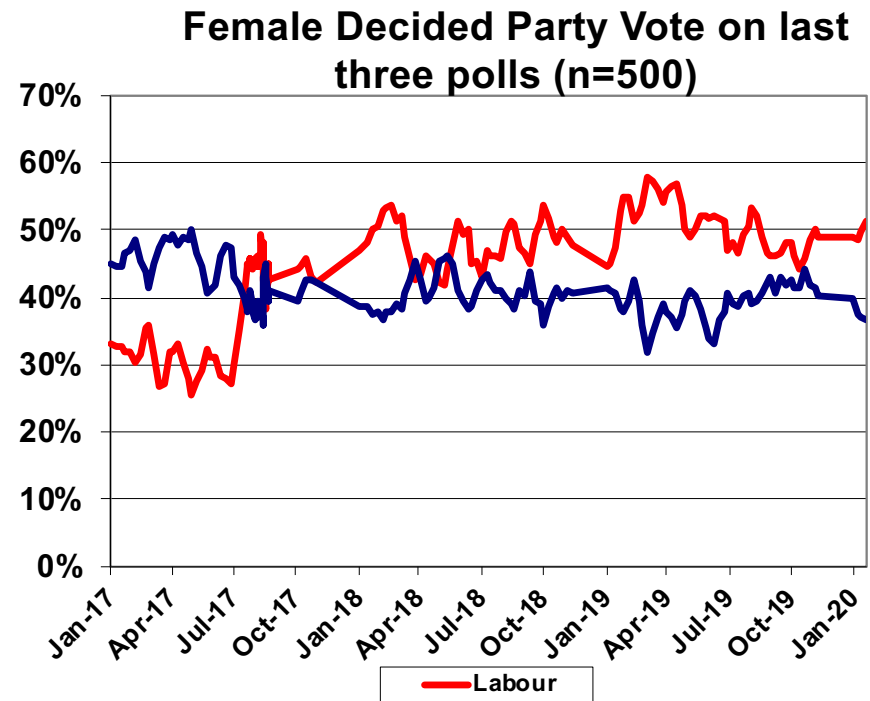
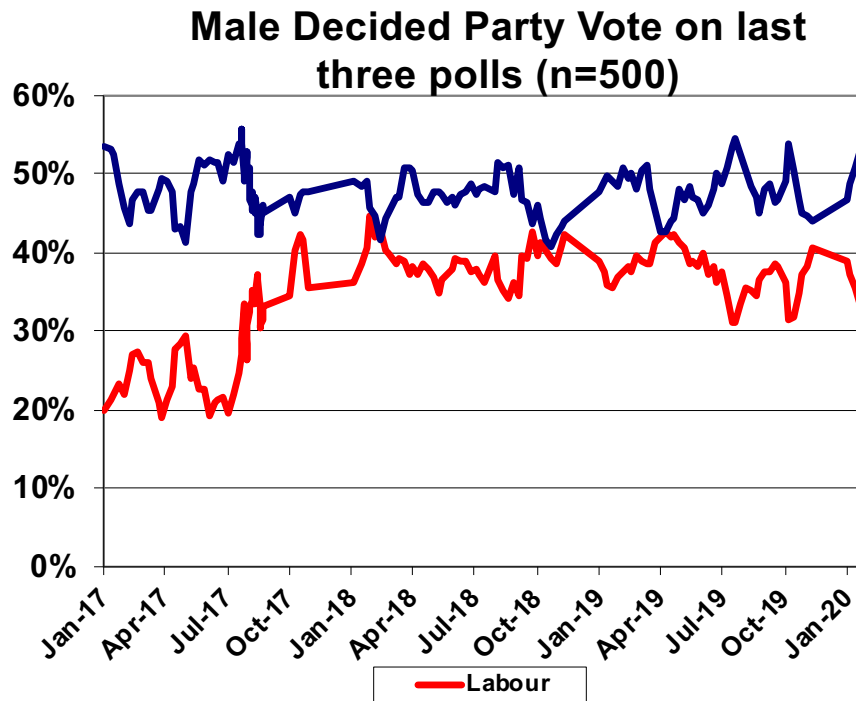


The polls for the last three years

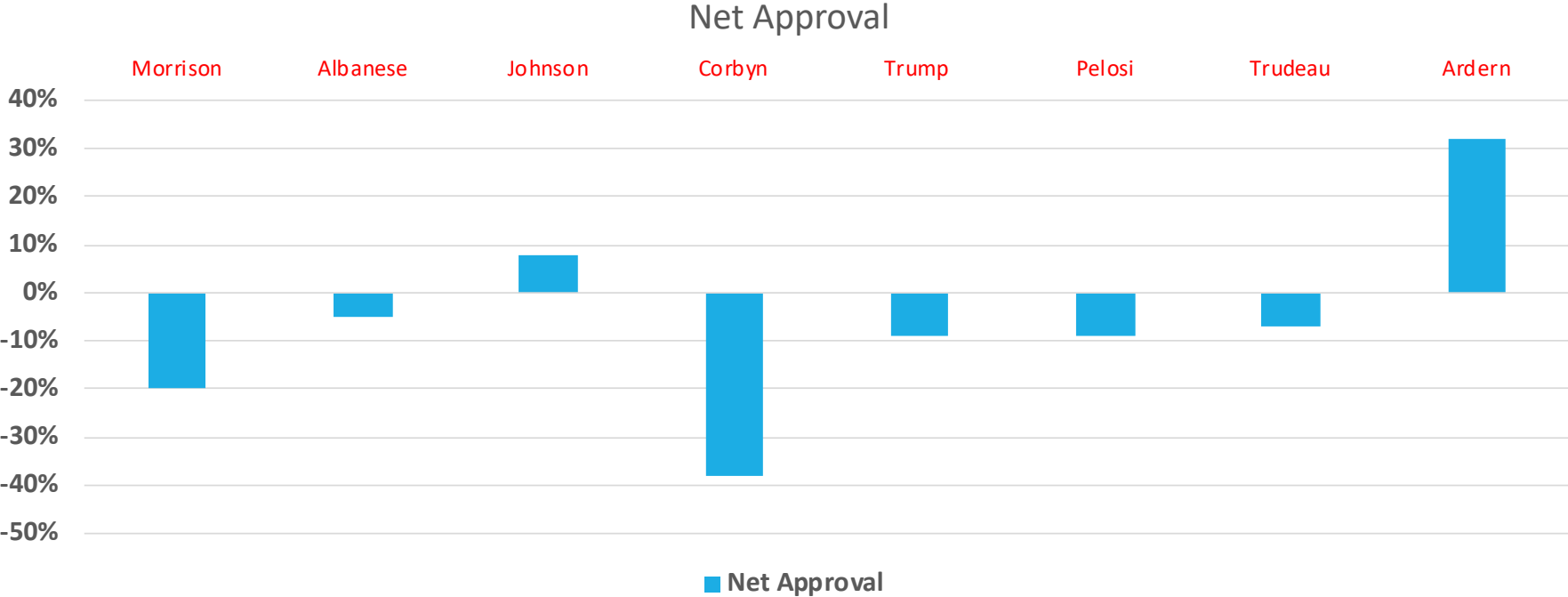
All Public Polls - last three years



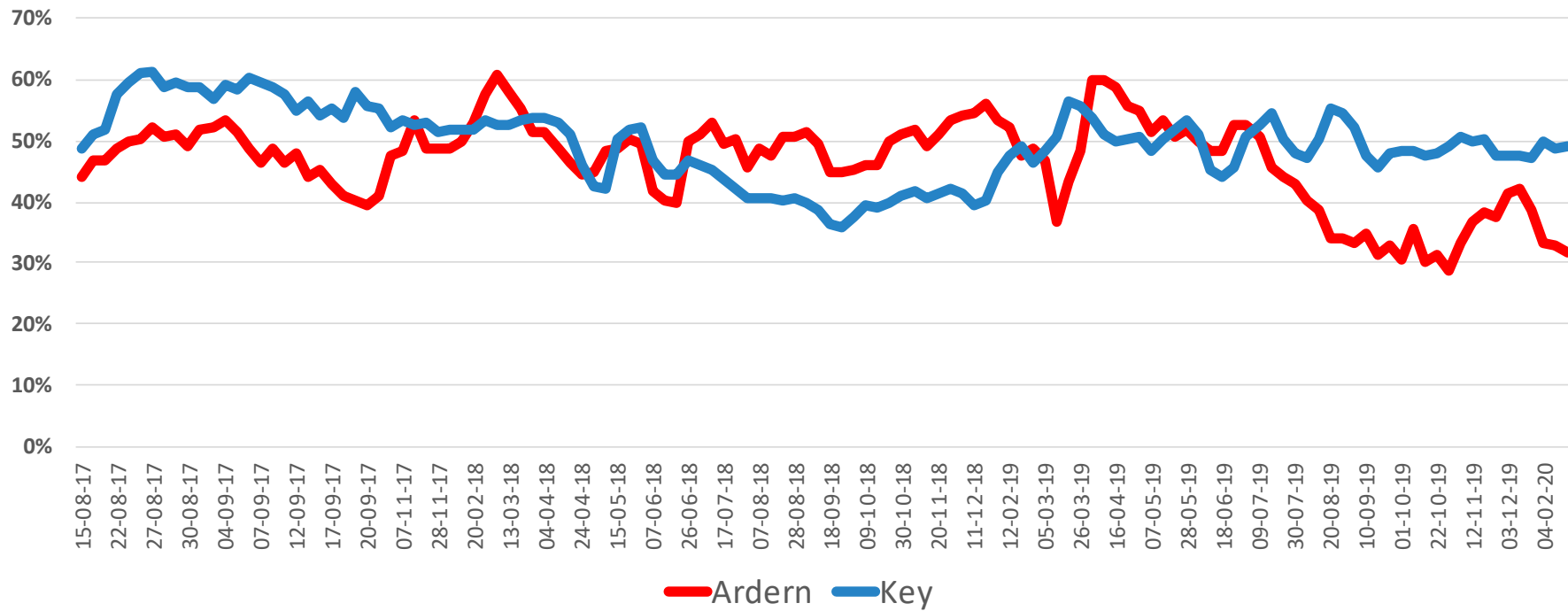
The gender gap



Net Approvals

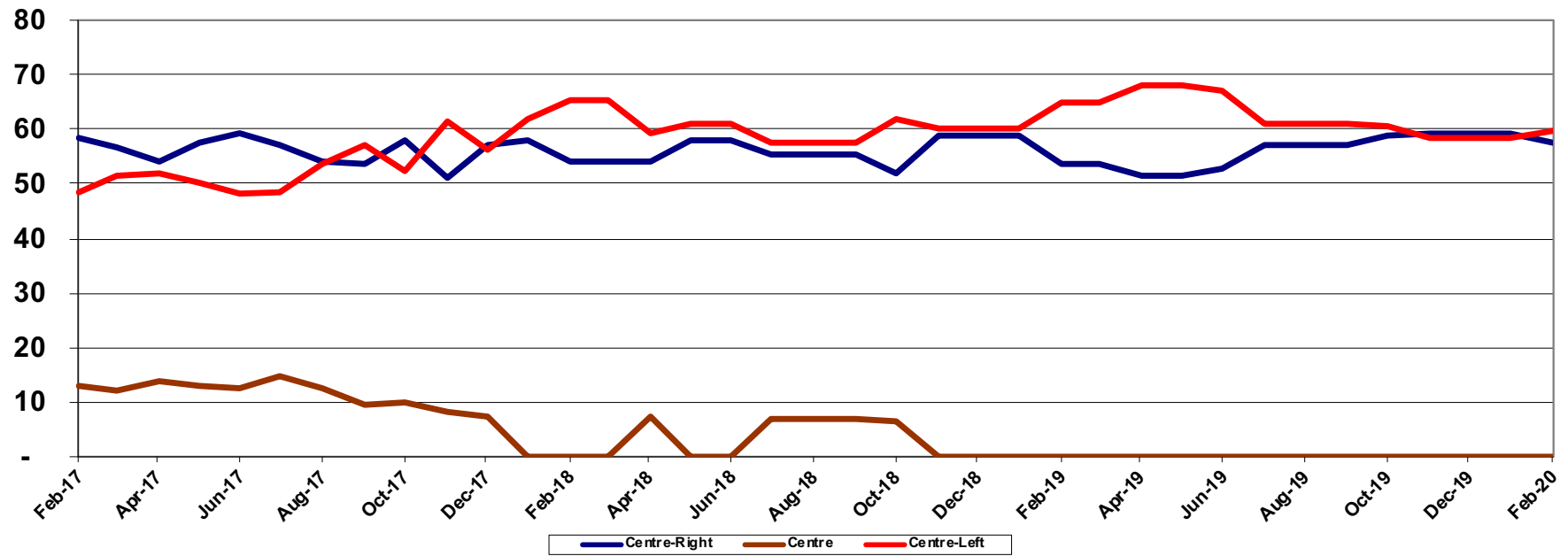


Ardern and Key net favourability



The seats


Seats on Average of Public Polls last three years



The Parties

- National
 - Labour
 - NZ First
 - Greens
 - ACT
 - Maori
 - New Conservative
 - Sustainable NZ
 - TOP
 - Vision NZ
- 

Parties not in Parliament

- Only ACT has ever got elected without having an existing MP
 - Very hard to get 125,000 votes or win an electorate
 - To have a chance need three things
 - Money for paid media
 - Some simple clear policies
 - A leader who can get free media
- 

Scoring the Parties not in Parliament

	Money	Policies	Leader
Sustainable NZ	✓	✓	✗
Old Conservatives	✓	✓	✓
New Conservatives	✗	✓	✗
TOP with Gareth	✓	✗	✓
TOP without Gareth	✗	✗	✗
Vision NZ	✓	✗	✓
Maori Party	✗	✗	✗

Predictions

Labour will win unless they stuff up Coronavirus

SFO will lay charges against NZF figures before the election

NZ First will not make it back

Female Green MPs forced to make way for male candidates

Greens at serious risk of getting under 5% but if necessary Labour voters may strategically vote

ACT gets 2 to 4 MPs

Cannabis referendum lost

Euthanasia referendum passes

Two paths for National – mid 40s or low 30s – was on track for former before Coronavirus

Biggest challenge for Government before Coronavirus was Winston and lack of delivery – child poverty up, carbon emissions up, income inequality up, Kiwibuild at 0.3%, Billion trees at 2.5%